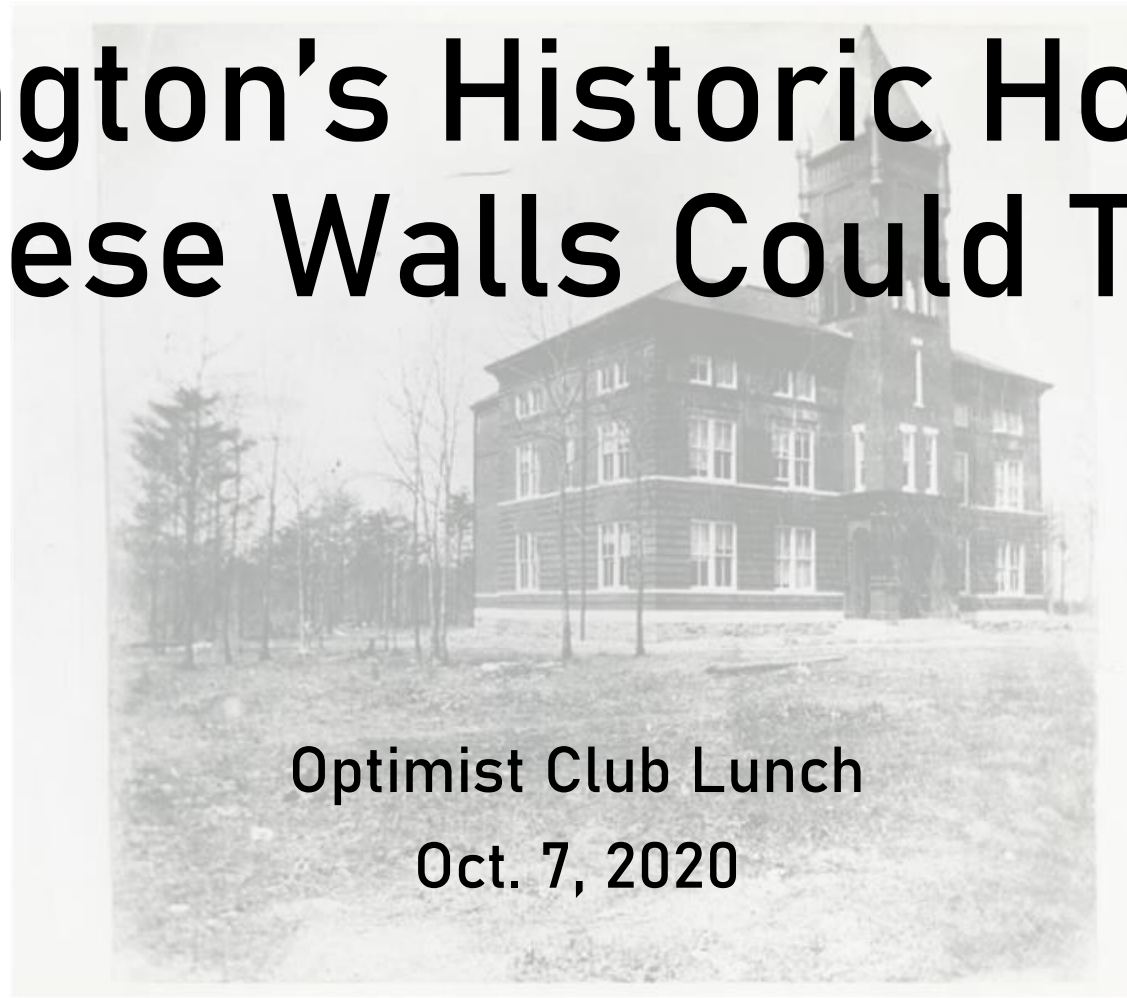


# Charlie Clark

## “Arlington’s Historic Homes: If These Walls Could Talk”



Optimist Club Lunch  
Oct. 7, 2020



Arlington House

1 3

GREEN DAY

GREEN DAY

GREEN DAY

GREEN DAY

GREEN DAY

GREEN DAY

GREEN DAY

GREEN DAY

GREEN DAY

GREEN DAY

GREEN DAY

GREEN DAY

GREEN DAY

GREEN DAY

GREEN DAY

GREEN DAY

GREEN DAY

GREEN DAY

GREEN DAY

GREEN DAY

GREEN DAY

GREEN DAY

GREEN DAY

GREEN DAY

GREEN DAY

GREEN DAY

GREEN DAY

GREEN DAY

GREEN DAY

GREEN DAY

GREEN DAY





The screenshot displays a digital map application interface. On the left side, there is a grid of 12 historical photographs, each with a small blue icon and a label. The labels are as follows:

- Row 1: 1. Damaged bridge, 2. Long bridge, 3. Jackson City
- Row 2: 4. [illegible], 5. [illegible], 6. [illegible]
- Row 3: 7. [illegible], 8. [illegible], 9. [illegible]
- Row 4: 10. [illegible], 11. [illegible], 12. [illegible]

On the right side, a map of a county is shown, highlighted in yellow. The county is densely populated with blue location pins. A label 'Jackson City' is visible on the map. The map is titled 'n County, VA, 1920' and shows a river to the east. The bottom of the screen shows a Windows taskbar with various application icons.













































































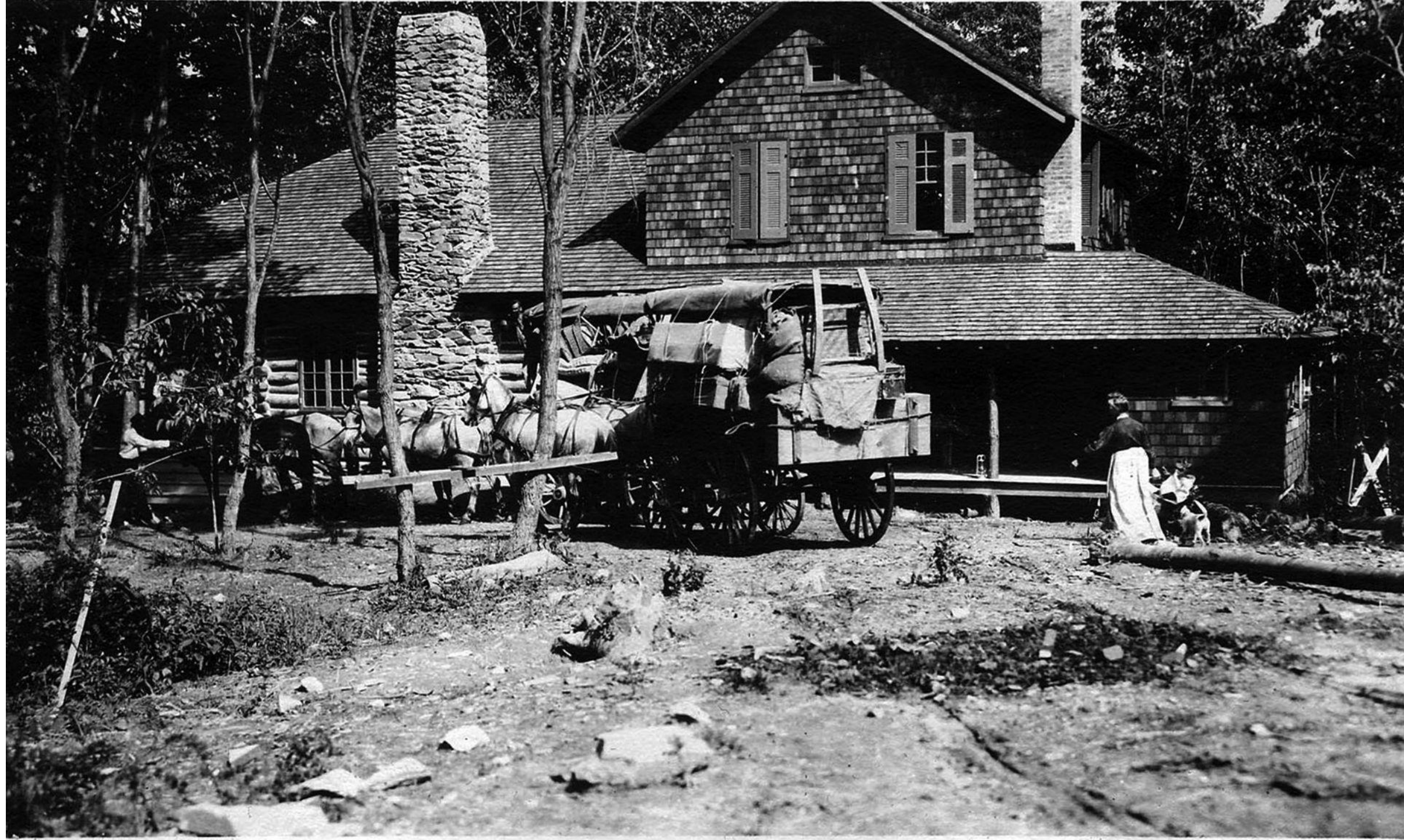
























RG 54

PHONE CHESTNUT 1010



## **RIXEY MANSION**

**2807 N. GLEBE ROAD - ARLINGTON, VA.**

SIX MILES FROM THE WHITE HOUSE

**FORMERLY THE ESTATE OF ADMIRAL RIXEY  
SURGEON GENERAL U.S.N.**

**SERVING LUNCHEON, AFTERNOON TEA  
AND DINNER**

**TO A DISCRIMINATING CLIENTELE WHO APPRECIATE  
THE BEST IN FOOD, SERVICE AND ENVIRONMENT**

**SPECIALIZING IN BRIDGE LUNCHEONS, TEA AND  
DINNER PARTIES AND DANCES**

**DIRECTIONS:** OUT LEE HIGHWAY TO FIRST  
TRAFFIC LIGHT, TURN RIGHT ONE HALF MILE ON  
GLEBE ROAD, ADJACENT TO WASHINGTON GOLF  
AND COUNTRY CLUB



